

RITECO

2025 Catalog



CONSTRUCTION PAPER 9 X 12

Brightly colored, high quality, premium heavyweight construction paper. RiteCo Construction Paper has superior strength and durability for all art and craft projects. Manufactured in an environmentally friendly process, this paper contains long fibers that fold without cracking, and cut evenly for the most detailed artwork. Each film wrapped package contains 50 sheets. Recyclable.

Colors available: Bright White (24101), Assorted (24102), Holiday Red (24103), Yellow (24104), Orange (24105), Black (24106), Holiday Green (24107), Bright Blue (24108), Pink (24109), Brown (24110), Violet (24111), Light Blue (24112), Dark Brown (24113), Light Green (24114), Dark Blue (24115), Dark Green (24116), Lilac (24117), Gray (24118), Hot Pink (24119), Magenta (24120), Light Brown (24121), Turquoise (24122), Scarlet (24123), and Bright Green (24126)



CONSTRUCTION PAPER 12 X 18

Brightly colored, high quality, premium heavyweight construction paper. RiteCo Construction Paper has superior strength and durability for all art and craft projects. Manufactured in an environmentally friendly process, this paper contains long fibers that fold without cracking, and cut evenly for the most detailed artwork. Each film wrapped package contains 50 sheets. Recyclable.

Colors available: Bright White (24501), Assorted (24502), Holiday Red (24503), Yellow (24504), Orange (24505), Black (24506), Holiday Green (24507), Bright Blue (24508), Pink (24509), Brown (24510), Violet (24511), Light Blue (24512), Dark Brown (24513), Light Green (24514), Dark Blue (24515), Dark Green (24516), Lilac (24517), Gray (24518), Hot Pink (24519), Magenta (24520), Light Brown (24521), Turquoise (24522), Scarlet (24523), and Bright Green (24526).



RAYDIANT FADE RESISTANT ART ROLLS

Available in a 24" x 12' size, with twenty brilliant, fade-resistant colors. Coated with double ink on one side of premium 50# basis paper, this product is ideal for art and craft projects. Each roll is individually film-wrapped, acid-free, lignin-free, and recyclable.

Canary Yellow, Orange, Bright Red, Pink, Purple, Light Blue, Medium Blue, Dark Blue, Lime Green, Bright Green, Holly Green, Warm Brown, Bright White, Black, Bright Blue, Magenta, Lilac, Light Yellow, Turquoise, Cool Gray.

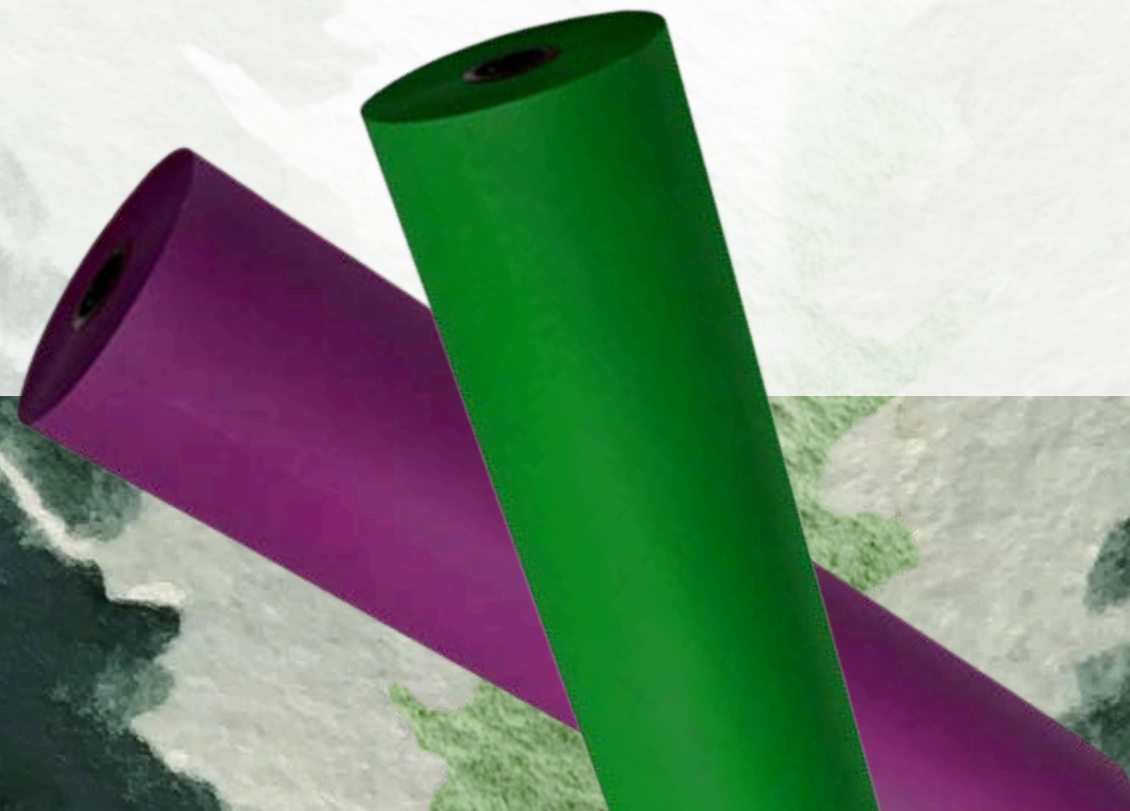
RAYDIANT FADE RESISTANT ART ROLLS ARE AVAILABLE IN A VARIETY OF COLORS BY SIZE: 48"X12' AND 48"X50' EACH OFFER 20 COLORS, WHILE 18"X50', 36"X30', AND 24"X60' EACH OFFER 17 COLORS.



DUAL SURFACE ART ROLLS – HEAVYWEIGHT

RiteCo dual-surface rolls feature a smooth side for felt pen, finger paints, and fine drawing, and a textured side for use with acrylics, tempera, and chalk. Each roll is individually boxed, with end caps designed to fit standard roll dispensers, and is recyclable.

These dual-surface heavyweight art rolls are offered in a 36"x1000' size and come in a selection of 15 colors: White, Canary, Black, Flame Red, Orange, Emerald Green, Dark Blue, Brown, Purple, Scarlet, Bright Green, Pink, Light Green, Light Blue, and Bright Blue



DUAL SURFACE ART ROLLS – MEDIUM WEIGHT

RiteCo Dual Surface Art Rolls – Medium Weight are available in two sizes: 48"x200' and 36"x1000'. These rolls have a smooth side for felt pen, finger paints, and fine drawing, and a textured side for acrylics, tempera, and chalk. Each roll is individually boxed, with end caps to fit standard roll dispensers, and is recyclable.

The 48"x200' rolls are available in White, Canary, Black, Flame Red, Orange, Emerald Green, Dark Blue, Brown, Purple, Scarlet, Pink, Light Green, Light Blue, and Bright Blue. The 36"x1000' rolls are available in White, Canary, Black, Flame Red, Orange, Emerald Green, Dark Blue, Brown, Purple, Scarlet, Bright Green, Pink, Light Green, Light Blue, and Bright Blue.



TAGBOARD

RiteCo Tagboard is a smooth and strong, multi-purpose material ideal for posters, crafts, and art projects. It comes in three weights: lightweight (7-point), which is comparable to 100# weight; medium weight (9-point), similar to 125# weight; and heavyweight (11-point), comparable to 150# weight. All options are recyclable.

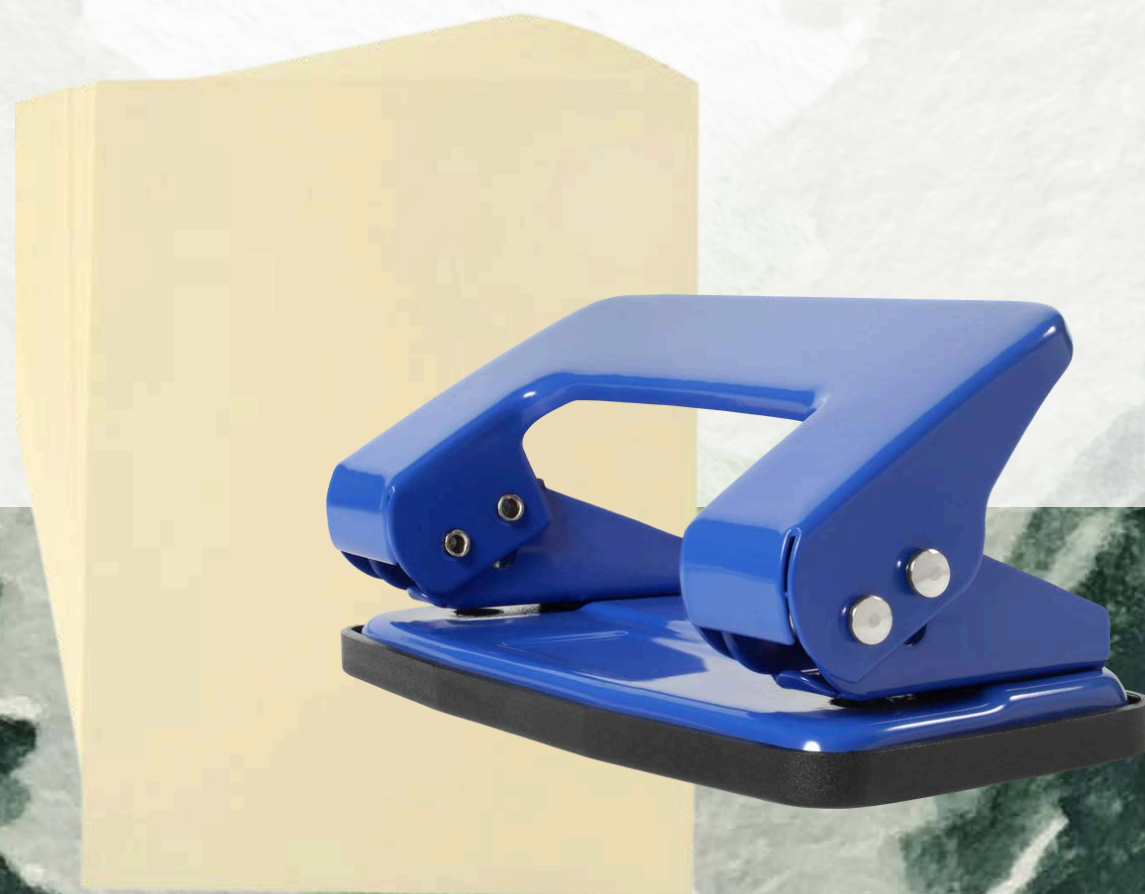
The available sizes and colors are as follows: Manila Lightweight in 9"x12" (10101), 12"x18" (10102), 18"x24" (10103), and 24"x36" (10104); White Lightweight in 9"x12" (10151), 12"x18" (10152), 18"x24" (10153), and 24"x36" (10154); Manila Medium Weight in 9"x12" (10111), 12"x18" (10112), 18"x24" (10113), and 24"x36" (10114); White Medium Weight in 9"x12" (10161), 12"x18" (10162), 18"x24" (10163), and 24"x36" (10164); Manila Heavyweight in 9"x12" (10121), 12"x18" (10122), 18"x24" (10123), and 24"x36" (10124); and White Heavyweight in 9"x12" (10171), 12"x18" (10172), 18"x24" (10173), and 24"x36" (10174).



RULED & ASSORTED TAGBOARD

The Asst Tagboard is a multi-color assortment of high-quality, medium-weight index stock, ideal for posters, crafts, and art projects. It is recyclable and available in the following sizes: 9"x12" (10201), 12"x18" (10202), 18"x24" (10203), and 24"x36" (10204).

The Ruled Tagboard is a strong and smooth tagboard with a guideline ruled at 1 1/2" and a two-hole punch for use with easels. It is ruled on both sides, recyclable, and available in a 24"x36" size, Manila (10191).



SENTENCE STRIPS

RiteCo 24"x3" Sentence Strips come in packs of 100 sheets of strong tagboard and kraft strips, featuring clear 1 1/2" guideline ruling and a single line on the reverse side. These strips are perfect for cursive and manuscript handwriting practice, flash cards, and various teaching aids. They are available in White, Manila, and an assorted five-color pastel set. All options are recyclable.

Available: Manila Tag Sentence Strip (10192), White Tag Sentence Strip (10193), Assorted Tag Sentence Strip (10194), Assorted Kraft Sentence Strip (10195), and Assorted Bright Sentence Strip (10196).



FINGERPAINT & MANILLA DRAWING PAPER

RiteCo Fingerpaint Paper is a heavy, white, coated stock designed to hold liquid finger paint without bleeding. It is recyclable and available in two sizes: 16"x22" (13101) and 11"x16" (13103).

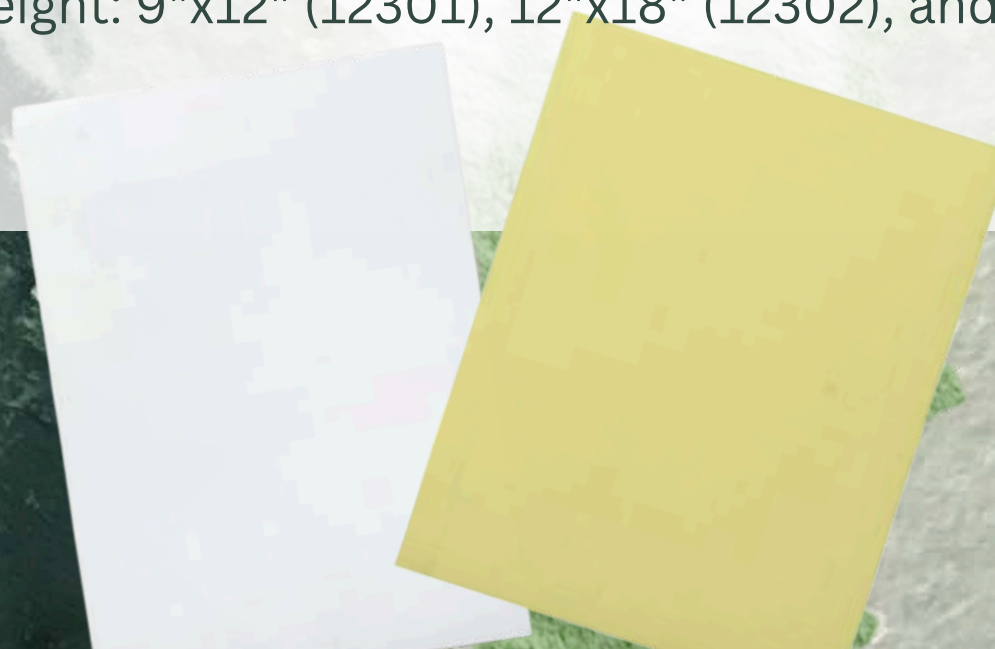
RiteCo Manilla Drawing Paper is a creamy, manila-colored drawing paper popular with beginning art and sketching. It can be used with pencils, crayons, and charcoal. Each ream contains 500 sheets and is recyclable.

The available options are:

Economy Weight: 9"x12" (12101), 12"x18" (12102), and 18"x24" (12103)

Medium Weight: 9"x12" (12201), 12"x18" (12202), and 18"x24" (12203)

Heavy Weight: 9"x12" (12301), 12"x18" (12302), and 18"x24" (12303)



WHITE SULPHITE DRAWING PAPER

RiteCo White Sulphite Drawing Paper is a multi-purpose, bright white drawing paper with excellent texture, retention, and strength. It comes in three weights to handle various art and craft projects: Medium, Heavyweight, and Premium. Each ream contains 500 sheets, and the paper is recyclable.

The available options are:

- Medium Weight: 9"x12" (14101), 12"x18" (14102), and 18"x24" (14103)
- Heavyweight: 9"x12" (14201), 12"x18" (14202), 18"x24" (14203), and 24"x36" (14204)
- Premium Weight: 9"x12" (14301), 12"x18" (14302), 18"x24" (14303), and 24"x36" (14304)



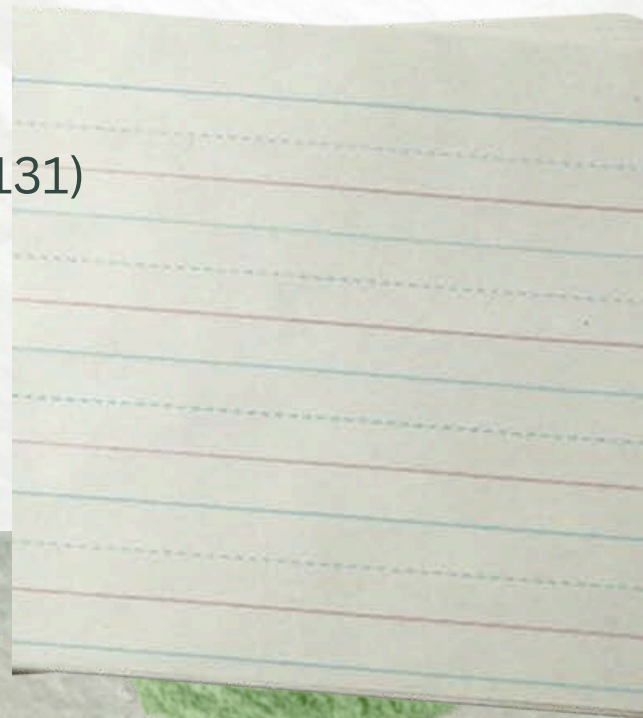
PLAIN WHITE & RULED NEWSPRINT

Plain White Newsprint is a smooth-finish white newsprint paper suitable for various practice, sketch, and art applications. Each ream contains 500 sheets, and the paper is recyclable. The available sizes are 8.5"x11" (23102), 9"x12" (23103), 12"x18" (23104), 18"x24" (23105), and 24"x36" (23106).

Ruled Newsprint is a white newsprint with blue rulings, a dotted midline, and skip spaces, making it ideal for writing practice. It is recyclable and comes with 500 sheets per ream

The options include:

- 1"x1/2"x1/2" Light Weight (11"x8.5") (23121)
- 3/4"x3/8"x3/8" Light Weight (11"x8.5") (23122)
- 1/2"x1/4"x1/2" Light Weight (11"x8.5") (23123)
- 1/2"x1/4"x1/4" Light Weight (11"x8.5") (23124)
- 3/8" Short Width (8"x10.5") (23126)
- 7/8"x7/16" Picture Story Light Weight (18"x12") (23131)
- 1"x1/2" Light Weight (11"x8.5") (23151)
- 3/4"x3/8" Light Weight (11"x8.5") (23152)
- 1/2"x1/4" Light Weight (11"x8.5") (23153)



PROGRAM SPECIFIC RULED NEWSPRINT

Ruled Newsprint for Zaner-Bloser® Programs is white newsprint with a red baseline, dotted blue midline, solid blue headline, and skip space. Each ream contains 500 sheets and is recyclable. The available options are:

- Kindergarten: 11/8"x9/16"x9/16", Red & Blue Ruled Light Weight, 10.5"x8" (23141)
- Grade 1: 5/8"x5/16"x5/16", Red & Blue Ruled Light Weight, 10.5"x8" (23142)
- Grade 2: 1/2"x1/4"x1/4", Red & Blue Ruled Light Weight, 10.5"x8" (23143)
- Grade 3: 1/2"x1/4"x1/4", Red & Blue Ruled Short Width, 8"x10.5" (23144)
- Grades 3-4: 3/8"x3/16"x3/16", Red & Blue Ruled Short Width, 8"x10.5" (23145)

Ruled Newsprint for D'Nealian® Programs also features white newsprint with a red baseline, dotted blue midline, solid blue headline, and skip space. Each ream contains 500 sheets and is recyclable. The available options are:

- Picture Story 4 1/2" Heading, Kindergarten: 5/8"x5/16"x5/16", Red & Blue Ruled Light Weight, 11"x8.5" (23161)
- Kindergarten: 5/8"x5/16"x5/16", Red & Blue Ruled Light Weight, 11"x8.5" (23162)
- Picture Story 4 1/2" Heading, Grade 1: 1/2"x1/4"x1/4", Red & Blue Ruled Light Weight, 11"x8.5" (23163)
- Grade 1: 1/2"x1/4"x1/4", Red & Blue Ruled Light Weight, 11"x8.5" (23164)
- Picture Story 5 1/2" Heading, Grade 2: 1/2"x1/4"x1/4", Red & Blue Ruled Short Width, 8.5"x11" (23165)
- Grade 2-3: 1/2"x1/4"x1/4", Red & Blue Ruled Short Width, 8.5"x11" (23166)

PRESENTATION BOARDS

RiteCo Presentation Boards are popular tri-fold display boards, ideal for science projects, puppet shows, and various types of displays. The assortment pack contains 4 Red, 4 Green, 4 Yellow, and 12 Blue boards. All boards are recyclable. Available options include White (48"x36", 22101), Assorted (48"x36", 22102), Black (48"x36", 22103), Blue (48"x36", 22104), Red (48"x36", 22105), Yellow (48"x36", 22106), Green (48"x36", 22107), White (40"x28", 22128), Black (48"x36", 22109), and White (48"x36", 22110).



CHART TABLETS

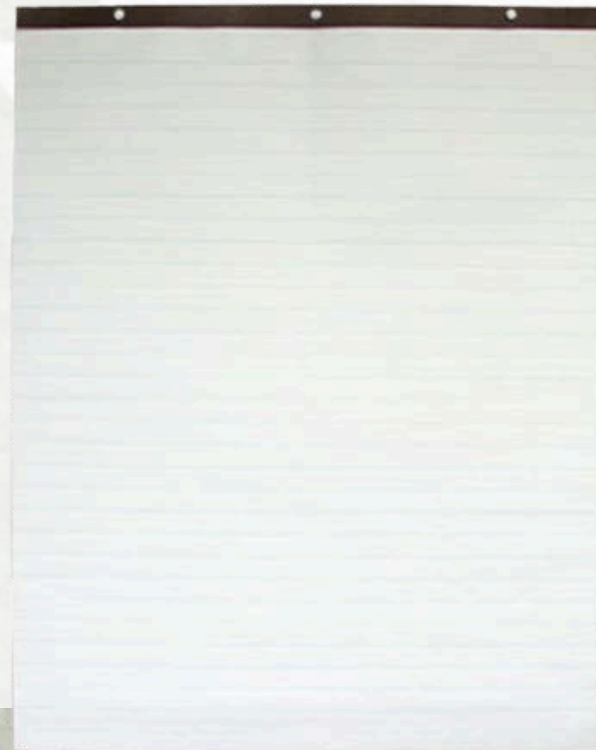
RiteCo Chart Tablets are made from easy-turn, spiral-bound white sulphite bond paper and are two-hole punched for easy hanging on stands. They are available in plain or ruled on both sides, with either cursive or manuscript covers, and are recyclable. Options include Unruled, 25 Sheets (24"x16", 17101); Ruled 1", Light Weight, 25 Sheets (24"x16", 17102); Ruled 1 1/2", Light Weight, 25 Sheets (24"x16", 17104); Unruled, 25 Sheets (24"x32", 17121); Ruled 1", Short Width, 25 Sheets (24"x32", 17122); Ruled 1 1/2", Short Width, 25 Sheets (24"x32", 17123); and Ruled 1", Short Width, Not Bound, 70 Sheets (24"x32", 17124).



PRIMARY CHART PADS & EASEL PADS

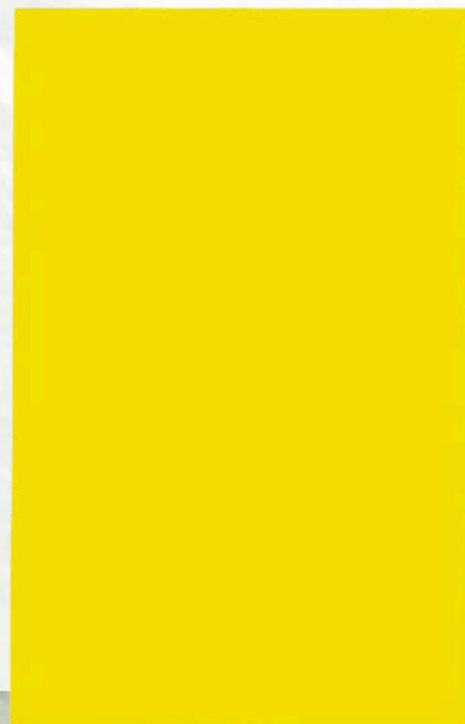
Primary Chart Pads are white newsprint pads ruled on one side, with a heavy chipboard back. They feature a strong glued binding and are two-hole punched for easy hanging. These pads are recyclable. Available options include Ruled 1", Light Weight, 36"x24" (19101); Ruled 1", Short Width, 24"x36" (19102); and Ruled 1", Light Weight, 24"x18" (19103).

Easel Pads are white bond pads with a perforated headstrip, heavy chipboard back, and three-hole punch for use with easels. These pads are recyclable. The available options are Unruled, 27"x34" (18101); Ruled 1", Short Width, 50 Sheets, 27"x34" (18102); and Ruled 1", Cross, 50 Sheets, 27"x34" (18103).



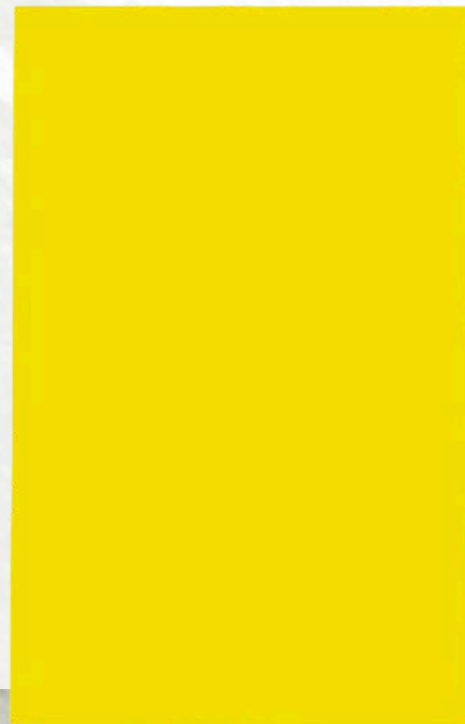
6-PLY RAILROAD BOARDS

RiteCo 6-Ply Railroad Board features a brightly colored, uniform, hard surface on both sides, making it ideal for posters, project mounting, matting, block printing, and various craft projects. It is available in an assortment that includes the ten leading colors and is recyclable. The options are White (22"x28", 15501), Assorted (22"x28", 15502), Black (22"x28", 15503), Red (22"x28", 15504), Dark Blue (22"x28", 15505), Lemon Yellow (22"x28", 15506), Orange (22"x28", 15507), Holiday Green (22"x28", 15508), Blue (22"x28", 15509), Canary (22"x28", 15510), Light Blue (22"x28", 15511), Brown (22"x28", 15512), Pink (22"x28", 15513), Purple (22"x28", 15514), Light Green (22"x28", 15515), and Magenta (22"x28", 15516).



4-PLY RAILROAD BOARDS

RiteCo 4-Ply Railroad Board has a brightly colored, uniform, hard surface on both sides, making it excellent for posters, project mounting, matting, block printing, and a variety of craft projects. It is available in an assortment containing the ten leading colors and is recyclable. The options are White (22"x28", 15101), Assorted (22"x28", 15102), Black (22"x28", 15103), Red (22"x28", 15104), Dark Blue (22"x28", 15105), Lemon Yellow (22"x28", 15106), Orange (22"x28", 15107), Holiday Green (22"x28", 15108), Blue (22"x28", 15109), Canary (22"x28", 15110), Light Blue (22"x28", 15111), Brown (22"x28", 15112), Pink (22"x28", 15113), Purple (22"x28", 15114), Light Green (22"x28", 15115), and Magenta (22"x28", 15116).



TRIM-IT SCALLOPED TRIM

The Trim-It Cartons feature corrugated scalloped trim in seventeen vibrant, fade-resistant colors, perfect for enhancing classroom bulletin boards and crafting projects. Each color is individually packaged in 50-foot rolls and is available in three carton sizes:

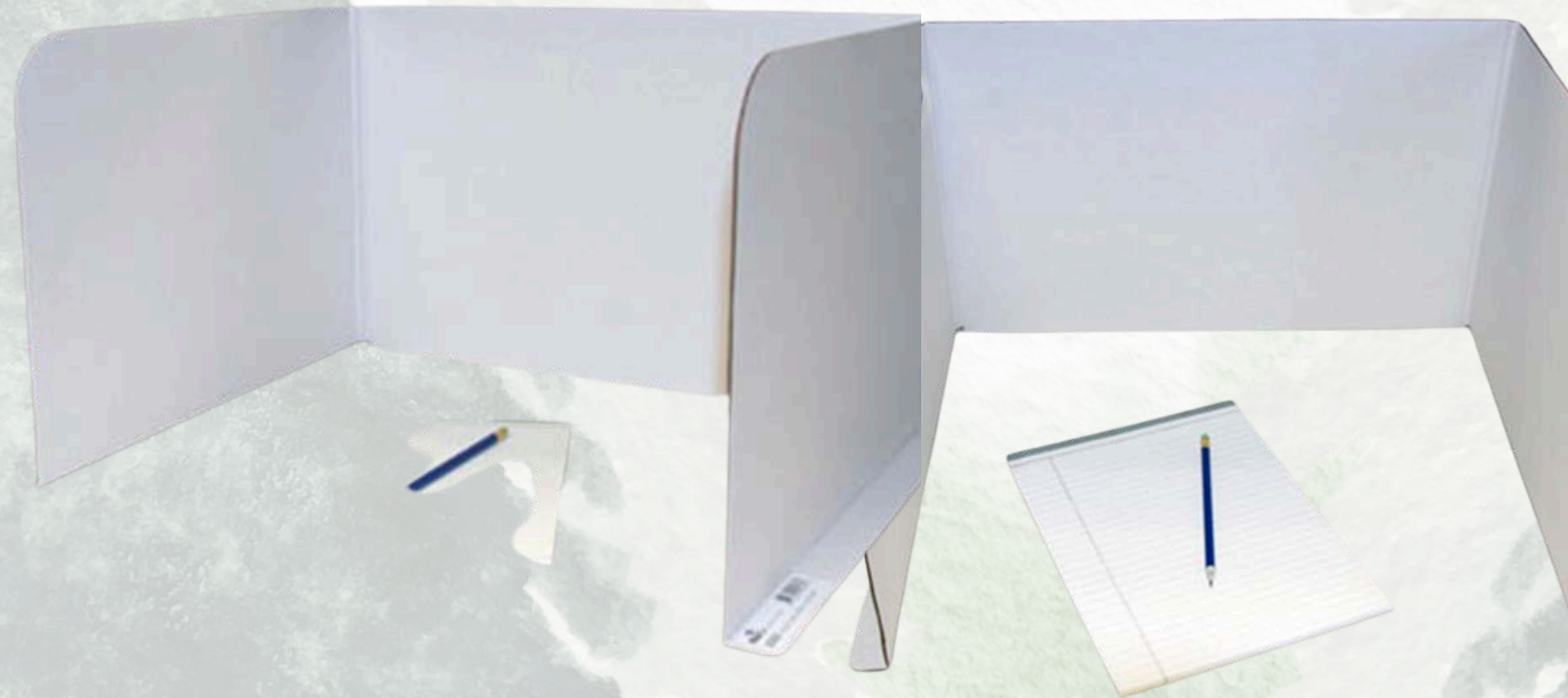
- The Sixty Roll Carton includes sixty rolls of 2.25" x 50' trim.
- The Eighteen Roll Carton includes eighteen rolls of 2.25" x 50' trim.
- The Six Roll Carton includes six rolls of 2.25" x 50' trim.

The available colors in each carton are: Canary (22801), Orange (22802), Bright Red (22803), Pink (22804), Purple (22805), Light Blue (22806), Medium Blue (22807), Dark Blue (22808), Lime Green (22809), Bright Green (22810), Holly Green (22811), Warm Brown (22812), Bright White (22813), Black (22814), Bright Blue (22815), Magenta (22816), and Lilac (22817).



STUDY CARREL

RiteCo Study Carrel is a three-panel, lightweight, and economical solution for ensuring privacy. It is essential in environments where concentration and privacy are needed. This carrel is white on both sides, measuring 13.25" x 55", and is fully recyclable.



KRAFT ROLLS

White Kraft Rolls offer strong bleached white kraft paper ideal for crafts, table covers, banners, and various art projects. These versatile, multi-purpose rolls are individually cartoned and equipped with end caps for standard roll dispensers. They are available in various sizes and weights and are recyclable. Sizes include:

- 40# White Kraft: 18"x1000', 24"x1000', 30"x1000', 36"x1000', 48"x1000'
- 50# White Kraft: 18"x1000', 24"x1000', 30"x1000', 36"x1000', 48"x1000'

Natural Kraft Rolls are durable and strong, making them a popular choice for wrapping, banners, table coverings, and crafts. Like the white kraft rolls, they are individually cartoned and have end caps to fit standard roll dispensers.

These recyclable rolls come in various sizes and weights:

- 40# Natural Kraft: 18"x1000', 24"x1000', 30"x1000', 36"x1000', 48"x1000', and 48"x200'
- 50# Natural Kraft: 18"x1000', 24"x1000', 30"x1000', 36"x1000', 48"x1000'

PAPER PRODUCTS FOR WRITING, ART, AND PRESENTATION

Notebook Fillers are white bond paper designed for theme writing, penmanship, and reports. These recyclable sheets are 3/8" ruled and side-ruled (SW), with five holes punched for easy use. Each pack contains 100 sheets, measuring 8"x10.5". Ruled Bond paper is also ideal for theme writing, penmanship, and reports. This recyclable white bond paper is available in two sizes: 8"x10.5" and 8.5"x11". The 8"x10.5" sheets are available in 3/8" ruling, side-ruled (SW), with options for reinforced margin (RM) and five-hole punched (5HP). The 8.5"x11" sheets are available in 3/8" ruling, side-ruled (SW), with options for reinforced margin (RM) and three-hole punched (3HP).

Easel Rolls are bright white 50# paper rolls wound on a sturdy fiber core, perfect for use with art easels. These recyclable rolls are available in 12"x50' and 18"x50'.

Banner Rolls are made of versatile bright white 50# paper, which is acid and lignin-free, making them excellent for banners, murals, and signage. These rolls come in a 24"x75' size.

Scratch Pads are white bond scratch pads that are shrink-wrapped and priced per dozen. They come in three convenient sizes: 3"x5", 4"x6", and 5"x8".

All of these products are recyclable and suitable for a variety of writing, art, and presentation purposes.



GGS

GOLDEN GLOBAL SALES

Contact Golden Global Sales today!

David Golden

484.432.8244

david@goldenglobalsales.com

Faith Hinkle

faith@goldenglobalsales.com